

USB Inspection Camera

User Manual

Introduction

Thanks for your purchasing the USB Inspection Camera

Our **USB Inspection Camera** are widely used in many areas, i.e.

1. automobile generator inspection
2. tube inspection
3. industry inspection, i.e. micro hole or cavity etc.
4. marks inspection
5. termites inspection
6. others

USB Inspection Camera can connect computer or monitor and operate easily. with **USB Inspection Camera** special matched software, you can take photos and record video easily.

Before you enjoy the fun of study or observing by **USB Inspection Camera**, please read the following carefully.

Content

intruduction.....	1
content.....	2
specification.....	3
working system.....	3
warn and notice.....	3
parts.....	4
Hardware install and use....	5
Software install and use .	5
Starting device.....	5
Language setting.....	6
Basic setting	6
Take photo.....	9
video.....	10
measure.....	13
option.....	16
output.....	17
display way.....	17
malfunction resolution.....	18
disclamer.....	19

Specification

1. resolution: 0.3M pixels
2. optics lens inside
3. auto-focusing
4. measure function
5. LED inside
6. pixel: maximum --30 FPS
7. interface: USB

Work platform

PC, system requested:

Windows 98SE/Me/2000/XP, Win98/98SE/VISTA/Windows7

XP/VISTA don't need a drive program

Pentium 233MHz processor or senior than it.

256MB SDRAM internal storage

USB2.0 interface

600MB available HD space



Warn and notice!

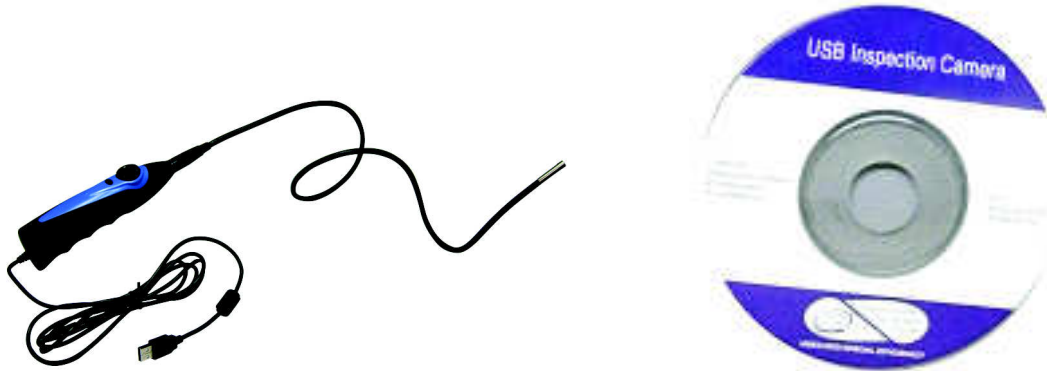
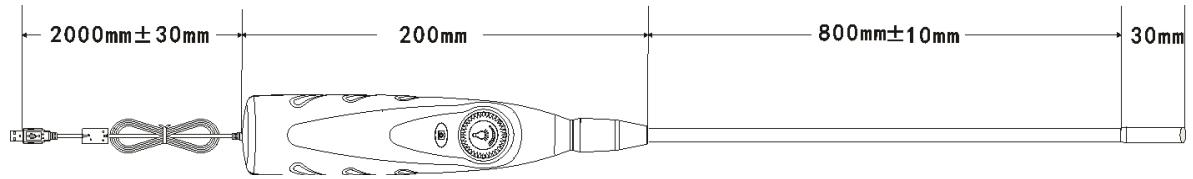
1. Don't touch the lens and LED with your hand as it may be dangerous or destroy the lens.
2. Don't dismantle the product which can lead to malfunction or electric

shock accident.

3. Don't pull out the plug or other interface with damp hands .
4. Don't link other plug to the product which may lead to accidents.
5. Don't clear the product with alcohol or organic dissolvent.
6. If the lens or visour becomes dirty, you'd better use dry non-gunny cloth or special lens paper to clear. don't touch the lens with hands which may produce scraping marks on its surface. don't apply force when clear it.
7. This product is designed for indoor use therefore avoid exposing in the open air. Lens damage can come from overhigh temperature and dampness.
8. favorable use environment: temperature: $0^{\circ}\text{C} \sim 40^{\circ}\text{C}$, relative humidity: 45% ~ 85%
9. If foreign matter or water permeated into camera or pull out the USB immediately and send to maintain center, no dry it with hair dryer.
10. When using the USB ware, avoiding people's being stumbled or camera's falling by USB.
11. To avoid possible electric shock accidents, break off the power before remove the computer or display.

Parts

1. Camera body
2. CD



Hardware install and use

1. move the USB Inspection Camera to a suitable place for observing the object.
2. revolve the LED lighting button on the handle to adjust lighting.

Software install and use

1. install

Operate **USB Inspection Camera** setup, and install follow the direction.

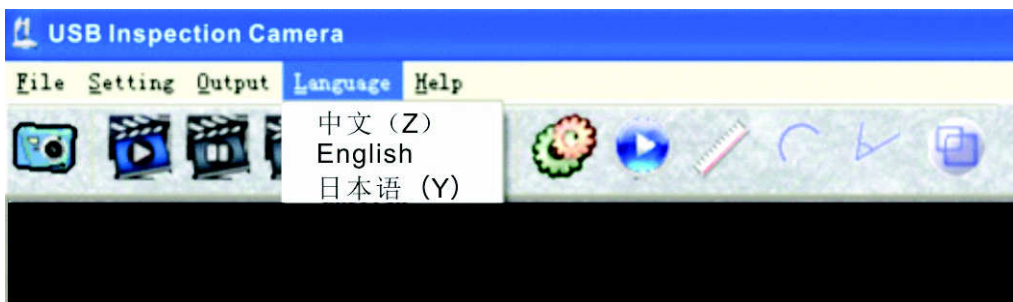
2.start device

Link the device to PC USB interface, So the Camera has been defined by PC, operate **USB Inspection Camera** and preview box display the object being observed.



3. Language setting

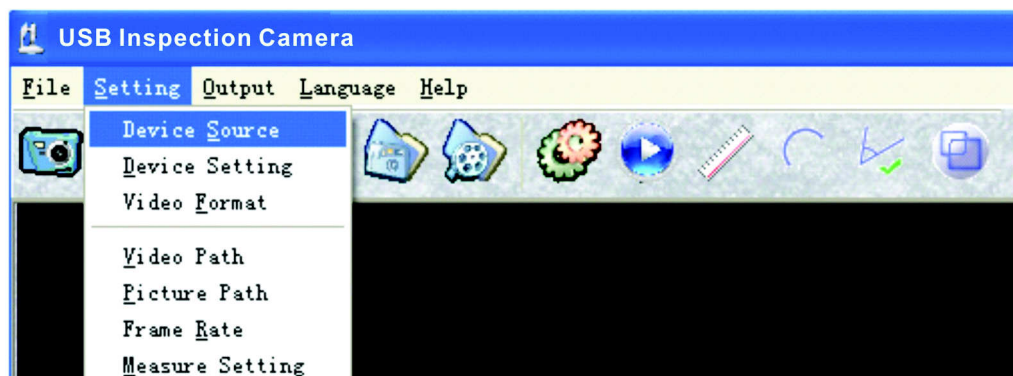
Support Chinese ,English,Japanese



4. Basic setting

1) Choose device source

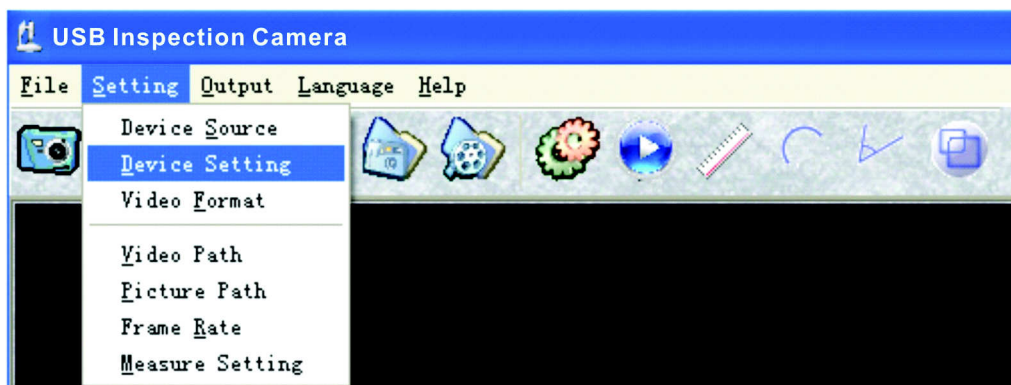
When several camera link to PC simultaneously, click the device source and find the needed device option in the order.





2) device setting

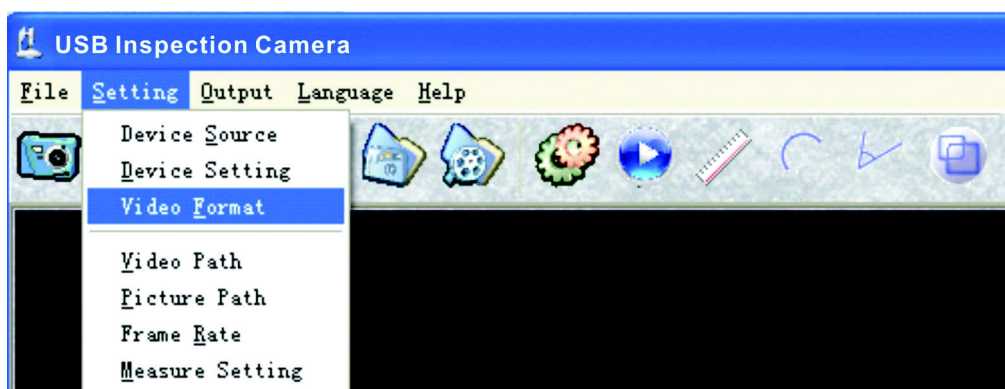
If not satisfied with device effect, pls try to change device setting or reset to default.

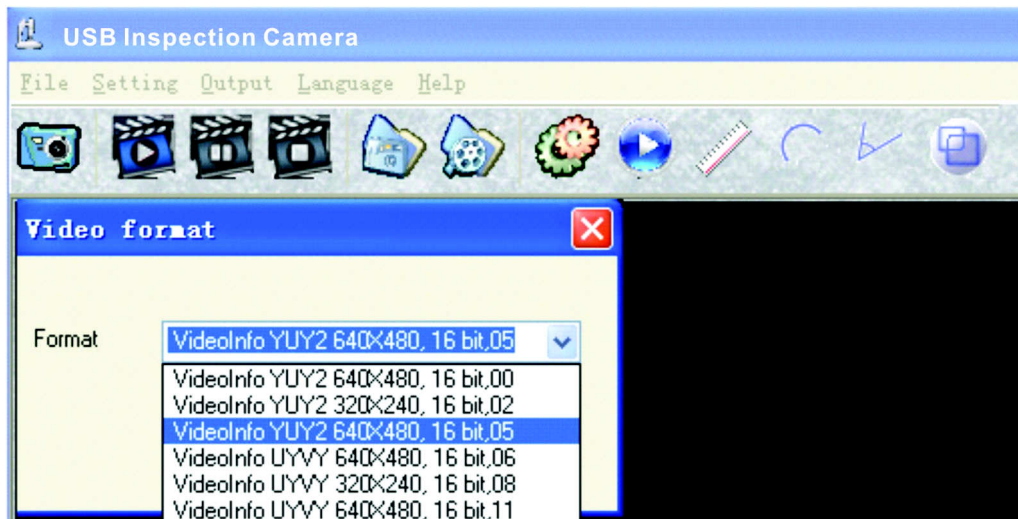




3) video format setting

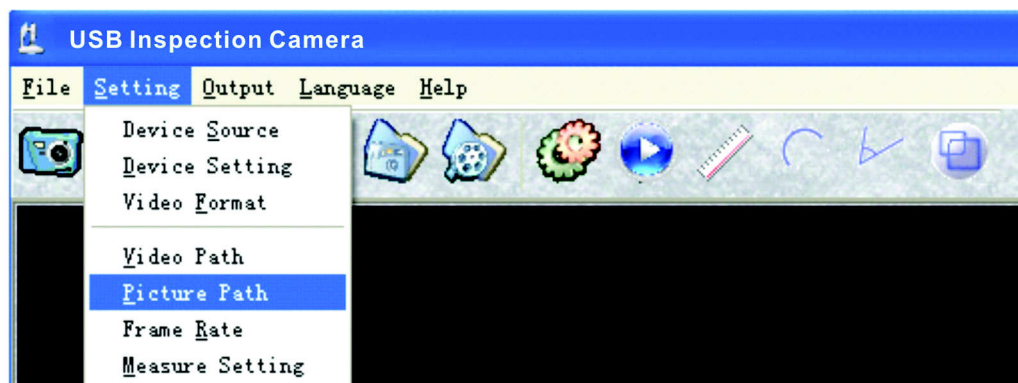
Used for change the preview resolution



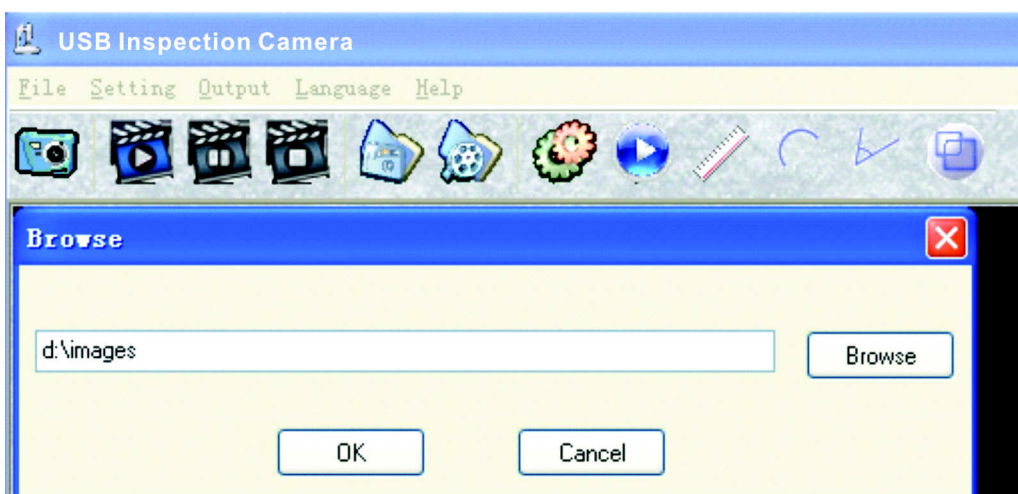


3. Take photos

1) set images save path



Enter specified content in dialog box, default is the IMAGES content below install content.



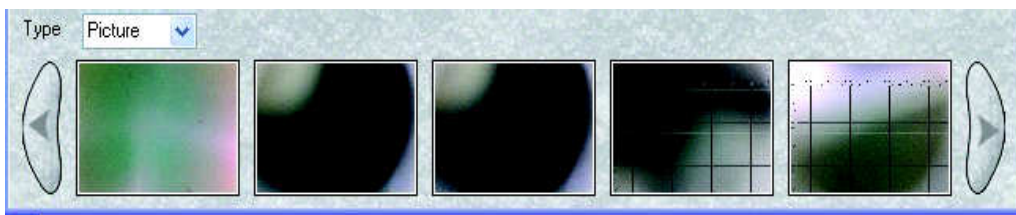
2) take photos



3) scan saved images

- A. open the image file
- B. double-click the images below preview box.

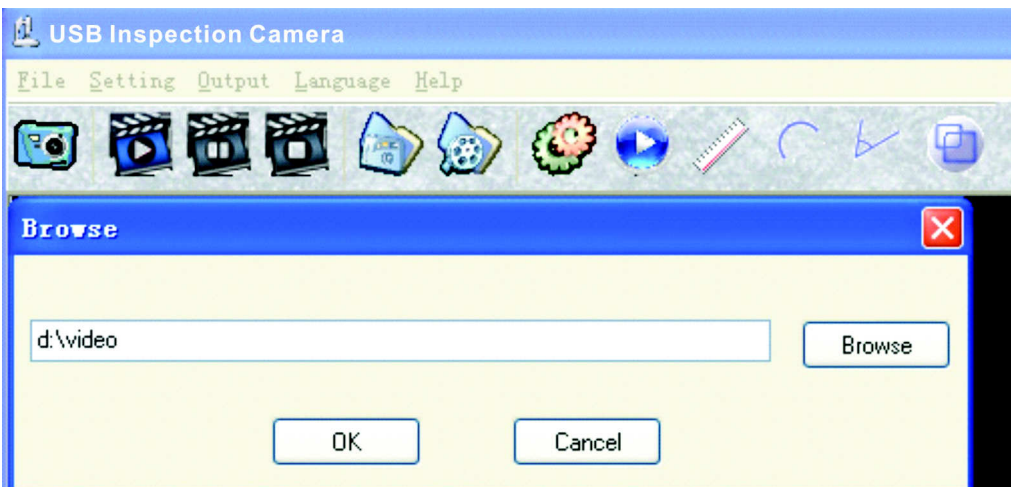
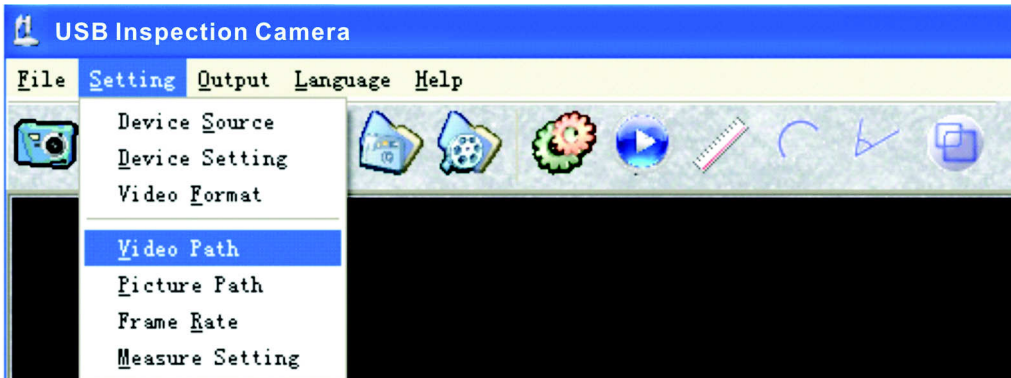
USB Inspection Camera operating instruction



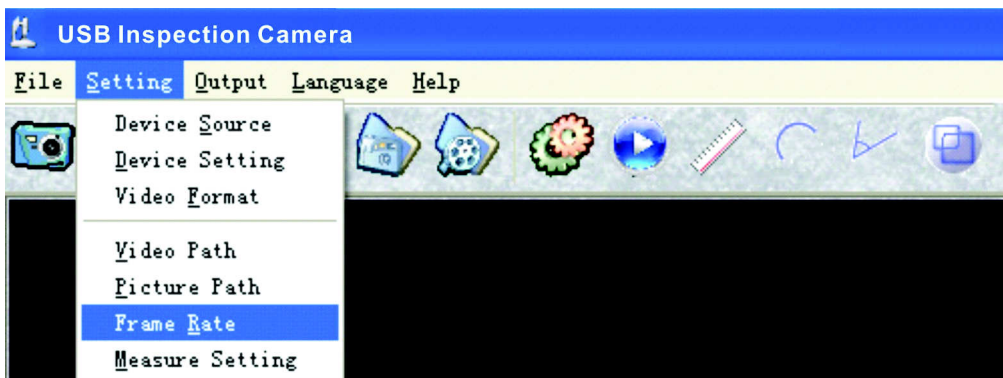
4. Video recording:

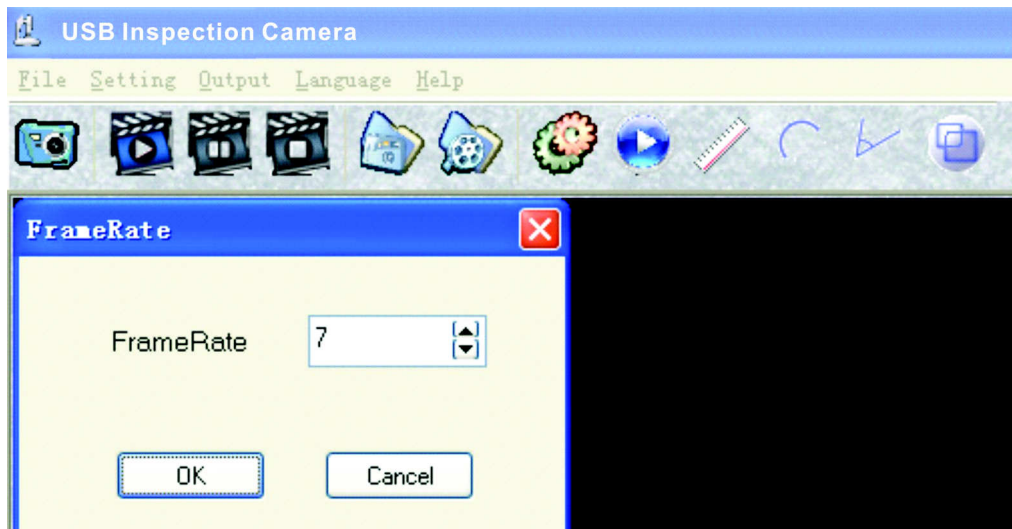
1) set video files save path

Enter specified content in dialog box, default is the VIIDEO content below install content.



2) video frame rate setting





3) start recording



4) pause



5) stop



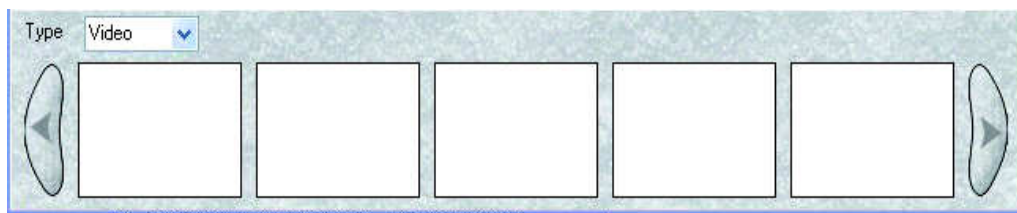
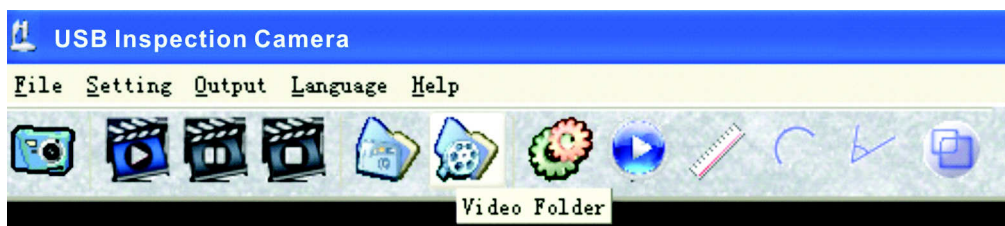
6) play video

A. click the player to play(only support DZC file)



B. open the image file

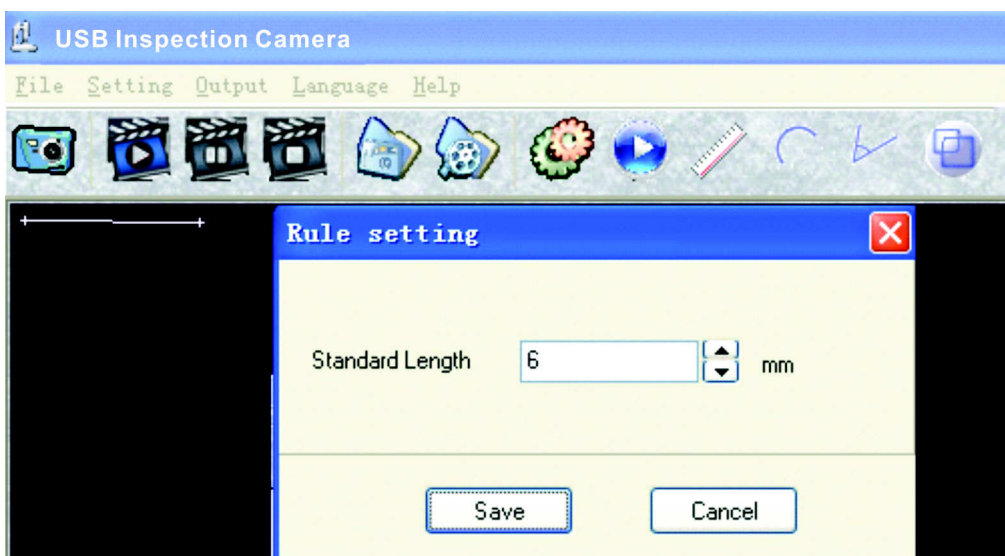
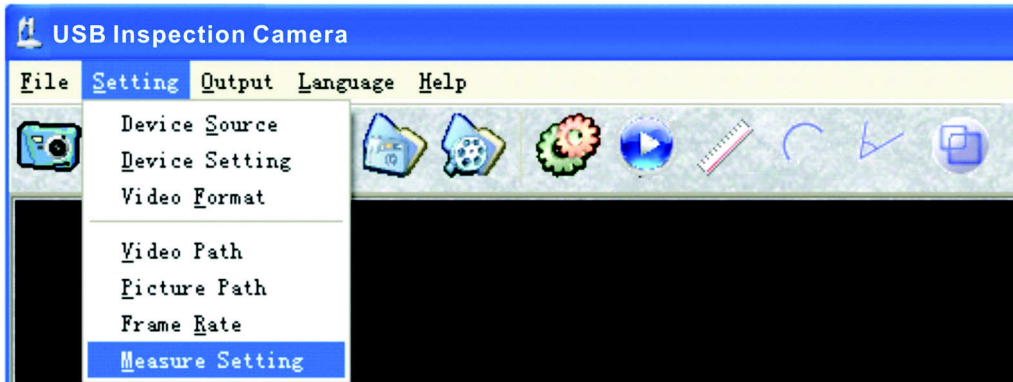
C. double-click the images below the preview box



3. Measure

1) set measure datum

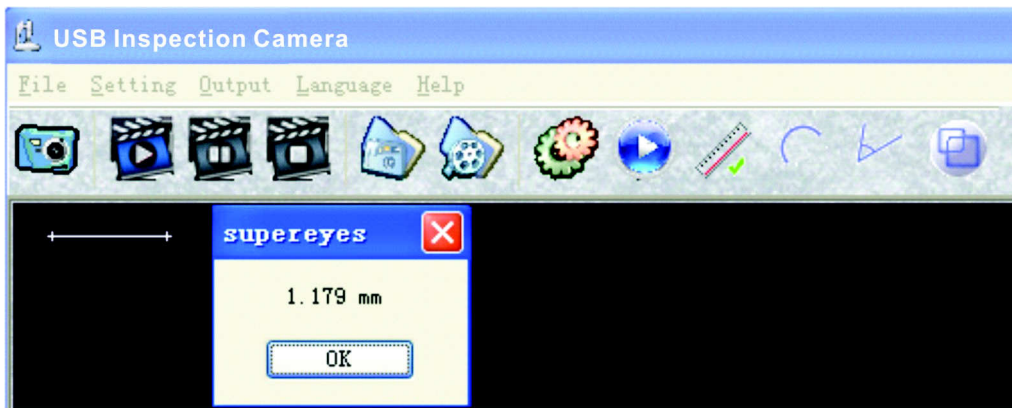
Put the highly accurate caliper in the visual field of camera, pull-out the datum and enter relevant figure.



2) **measure distance of point-to-point**

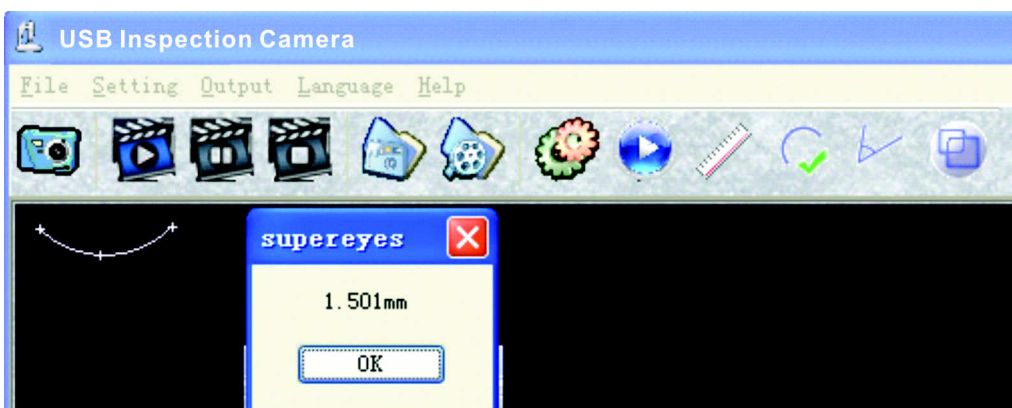
Click the left mouse button to finish measurement.





3) measure arc length

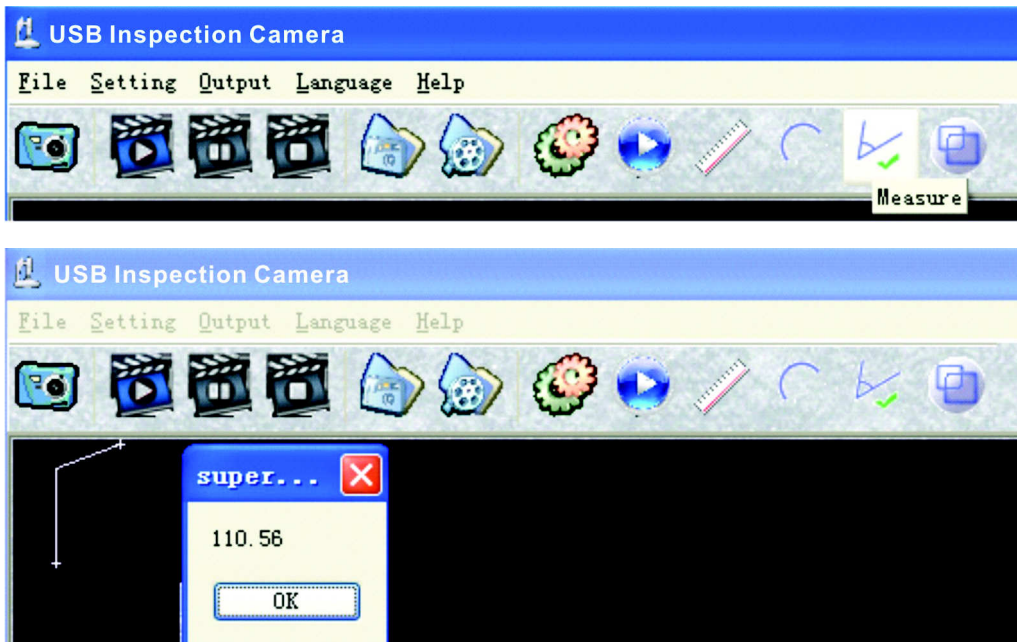
Click the left mouse button at the start-point and another point.
Move the mouse make it fit the original arc and click at the end-point,
then the result comes out.



4) measure angle

Click left mouse button at the peak of angle. Click the mouse at

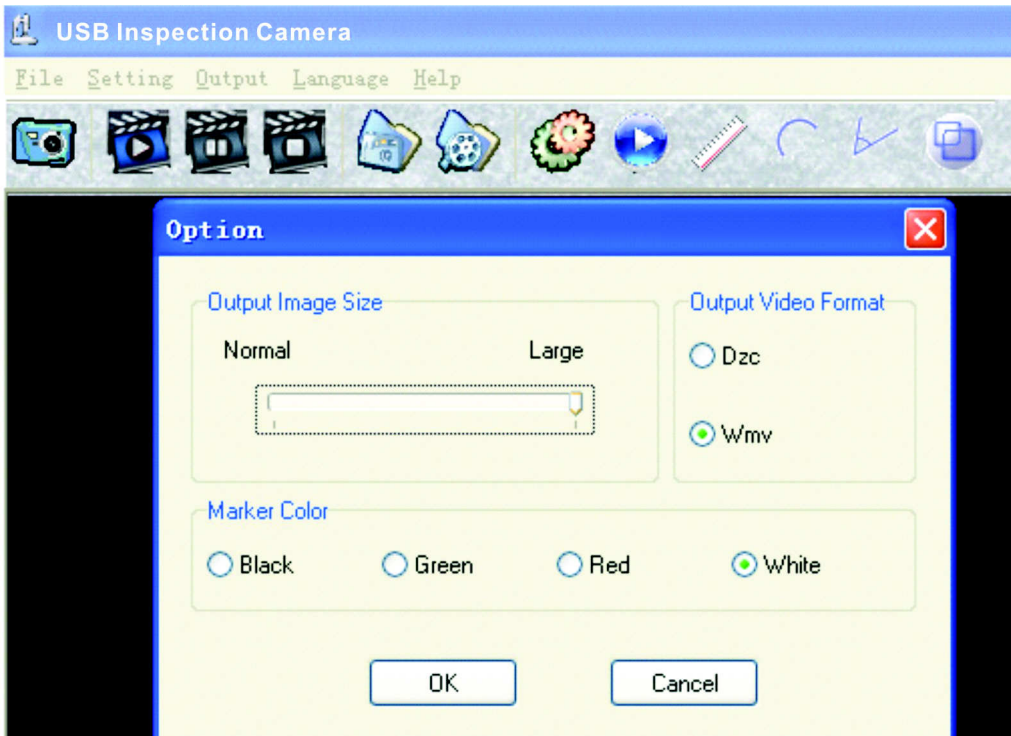
any a point along one side and click again in another side, then the angle result comes out.



4. Option setting

- 1) choose video recording format
 . WMV (general format) or DZC(special high compression format)
- 2) choose images format
- 3) choose the ruler's color





5. output

print images



6. display way

Choose full screen or full resolution



Solution of malfunction

No	Malfunction eg.	Possible reasons	Solution
1	Image black screen	Lighting malfunction Didn't open the preview Choose wrong device Didn't connect well with PC	Turn on the light Open the preview Choose suitable device Reconnect USB interface
2	Image being Vague 、discolor、low frame rate	Dirty lens Wrong focal distance Didn't connect well with PC Lower PC configuration	Click the lens Adjust focal distance Reconnect USB interface Change to another PC
3	Image distortion	Didn't connect well with PC Endoscope malfunction	Reconnect USB interface Return to the factory to maintain
4	Image flashing	Wrong frame rate	Choose the same frame rate with ur residence town
5	Can't be	Didn't connect well with	Reconnect USB

	recognized	PC Endoscope malfunction	interface Return to factory to maintain
6	Pointx: slow reaction、 no reaction	Climate factor Endoscope malfunction	Add dampness of pointx Return to factory to maintain
7	Adjust focusing failed	Snake tube overbend	Straighten the tube Return to factory to maintain

Disclaimer

This product's manufacturer and retailer won't be responsible for any products damage results from improper use. This instruction book's contents are synchronous with current products. We won't be responsible for any error in contents because products update. Meanwhile we don't undertake the obligation of update text content and information.